



Forbo Flooring
P.O. Box 13
1560 AA Krommenie
The Netherlands
Tel. +31 75 647 74 77
Fax +31 75 647 77 01
contact@forbo.com
www.forbo-flooring.com



Forbo, part of the Swiss Forbo Group, offers a full range of flooring products for both commercial and residential markets. High quality linoleum, vinyl and hardwood floors combine functionality, colour and design – giving you total flooring solutions for any environment.



creating better environments



forbo
artoleum®



LINOLEUM

creating better environments

Artoleum graphic 5314

Interior: Info Centre Bosch Solitaire Neff, Amsterdam-ZO, NL
Architect: Dedato designers & architects, Amsterdam, NL

Artoleum is produced from natural, renewable resources: linseed oil, rosins, wood flour, limestone, jute and environmentally safe pigments.

These are both the secret to each design's inimitable look and feel, and the reason why Artoleum is non-allergenic. They also explain why life-cycle assessment shows that linoleum is an ecologically preferable floor covering.





artoleum®



Technical specifications

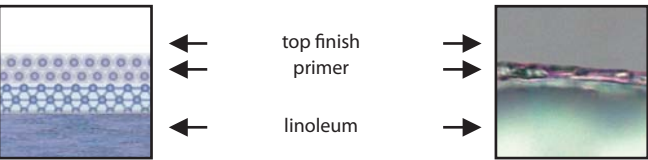
Artoleum meets the requirements of EN 14041			CE EN 14041
Reaction to fire	EN 13501-1	C _{fl} , s1	
Slip resistance	EN 13893	DS: ≥ 0.30	
Body voltage	EN 1815	<2 kV	
Thermal conductivity	EN 12524	0.17 W/m-K	
Artoleum meets the requirements of EN 548			
Total thickness	EN 428	2.5 mm	
Domestic heavy	EN 685	Class 23	
Commercial very heavy	EN 685	Class 34	
Industrial general	EN 685	Class 42	
Collection size		44 dessins	
Roll width	EN 426	2.00 m	
Roll length	EN 426	≤ 32 m	
Slip resistance	DIN 51130	R9	
Accoustical impact noise reduction	EN ISO 717-2	≤ 5 dB	
Castor chair continuous use	EN 425	Suitable for office chairs with castors.	
Indentation-residual	EN 433	0.08 mm, typical value	
Light fastness	ISO 105-B02	Method 3: blue scale minimum 6. Depending on the colour, the colour fastness is usually higher, often being 8 (blue scale maximum is 8).	
Resistance to chemicals	EN 423	Resistant to diluted acids, oils, fats and to the conventional solvents such as alcohol, white spirit, etc. Not resistant to prolonged exposure to alkalis.	
Bacteriostatic properties		Artoleum has bacteriostatic properties, which are confirmed by independent laboratories, even against the bacteria MRSA.	
Flexibility	EN 435	ø 40 mm	
Cigarette resistance	EN 1399	Marks left on linoleum as a result of stubbed-out cigarettes can be easily removed. Sandpaper gently and apply a new coat of polish. Linoleum does not melt.	
Life Cycle Assessment		LCA is the foundation for securing the lowest environmental impact.	

First-class linoleum finish



The advanced Topshield finish ensures that Artoleum’s unrivalled richness in colour and design stays sharp and striking. This water-based finish guarantees Artoleum floor coverings are easy to clean, ensuring low cleaning costs and a perfect appearance.

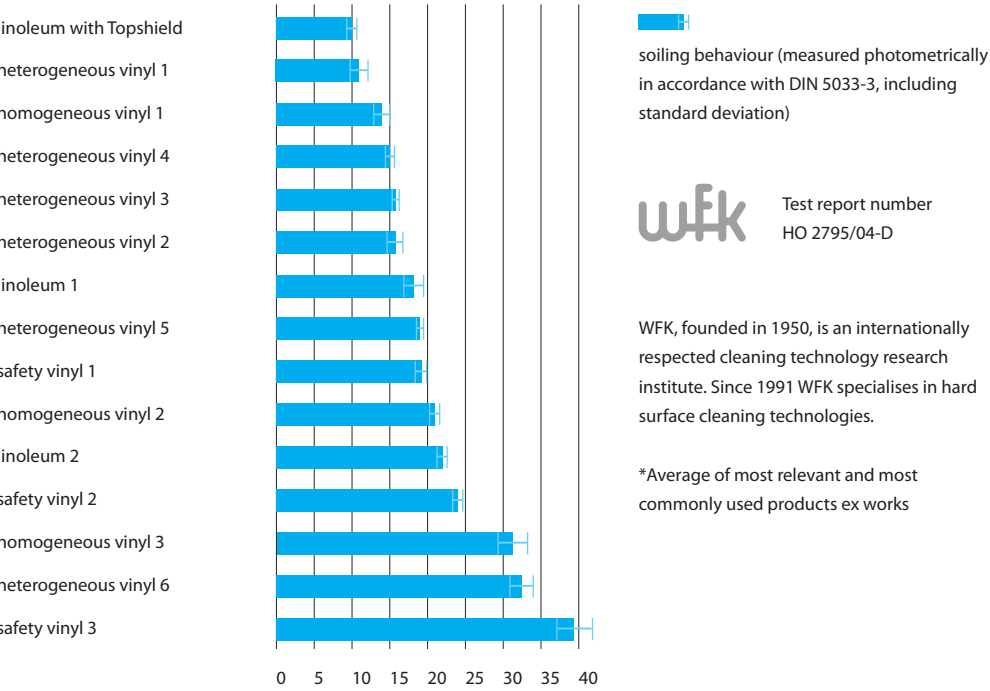
The secret of Topshield is the twin-layered system which ensures a highly effective shield against dirt. The primer guarantees smoothness and durability and the top finish resistance to scuffing and dirt. If desired the top finish can be renovated. Because of the beautiful matt surface of Topshield Artoleum keeps its natural look.



And it is proven

Topshield has been available on all Forbo’s linoleum flooring products since two years and millions of linoleum flooring with Topshield have been successfully placed in use all over the world. The functionality of Topshield has been proven by the independent test institute WKF. Of all tested resilient samples linoleum with Topshield showed the least dirt pick up.

Independent testing* by WFK proves high performance of linoleum with Topshield

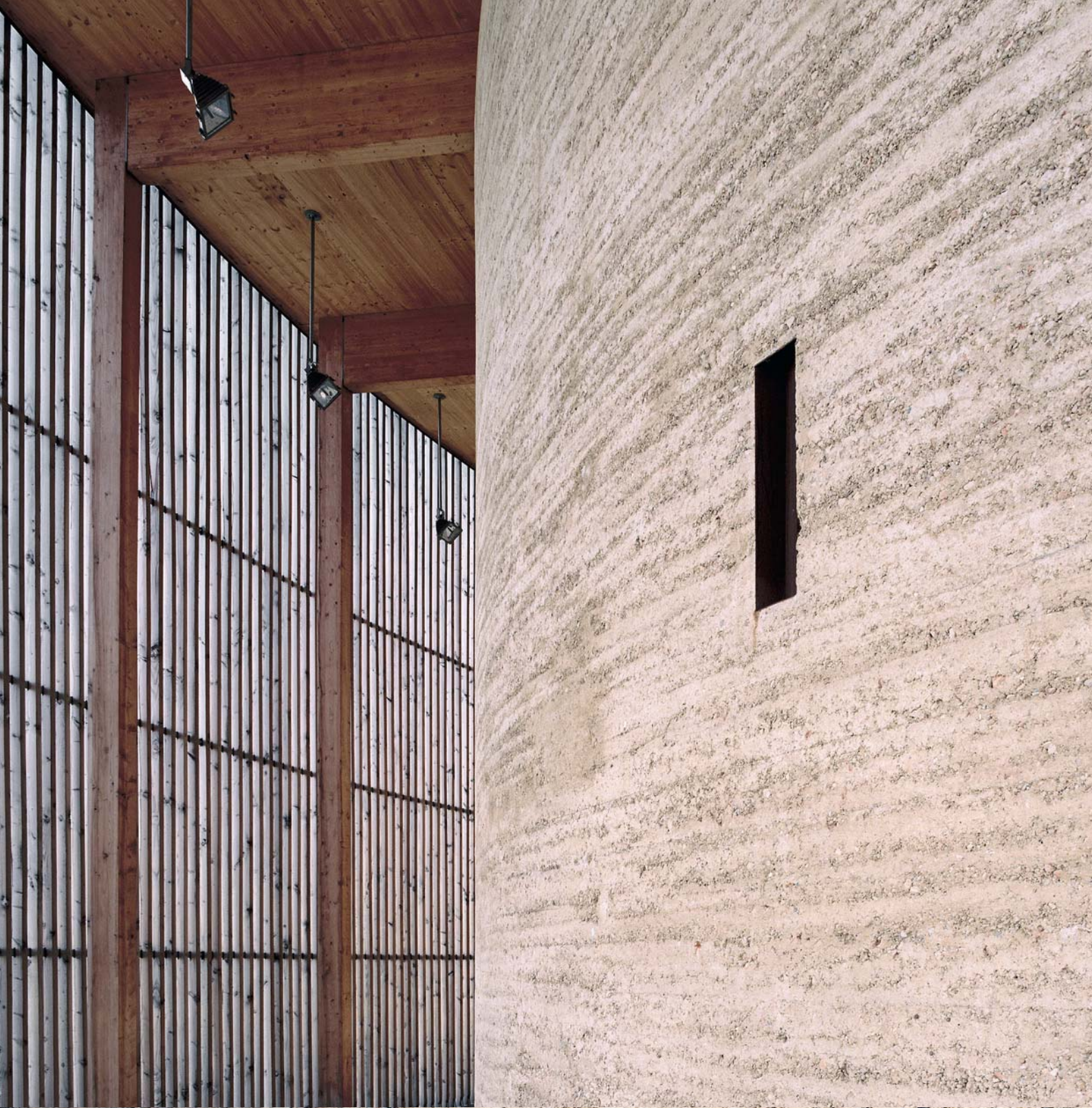


WFK Test report number HO 2795/04-D

WFK, founded in 1950, is an internationally respected cleaning technology research institute. Since 1991 WFK specialises in hard surface cleaning technologies.

*Average of most relevant and most commonly used products ex works

For more information log on to www.forbo-flooring.com



a world of wonders

Forbo Artoleum® is as unique as the world that surrounds us: a world of colour and texture, beauty and playfulness, contrasts and unexpected combinations. A world of wonders.

Artoleum is a unique flooring design in linoleum that is only available from Forbo. Unique because of its natural structure and wide range of colours and patterns. Unique because when you get close, 'zoom in', you can see the patterns for what they are – bold, yet refined and rich in texture. Unique because when you 'zoom out', they blend together while retaining their distinctive feel.

Endless possibilities that last

Artoleum is made from renewable resources including linseed oil, rosin, wood flour, jute, limestone and natural pigments. This is the secret to its proven durability. Because the colours in this homogenous material go all the way through, they can never wear off. In addition, Artoleum's advanced Topshield finish protects against scuffmarks and the build-up of dirt. Artoleum is also biodegradable, which ensures that Artoleum will not damage the very thing that inspired its creation: the world around us.



zoom zoom:



seen from close by, Artoleum has a lively pattern and unique structure, like the bark of a tree or the structure of concrete. Seen in context, the pattern blends together to add a refined feeling and texture to every environment.

a world of interiors

Artoleum consists of three design ranges and is ideal for use in a variety of commercial applications.

Each range has its own motif and story. 'Prisma' is inspired by the light-separating properties of the prism and consists of two families of patterns. 'Mineral' draws its inspiration from the variety and richness of natural stone. 'Graphic' is a timeless classic whose distinctive look is inspired by black and white lithography, etching and block printing.

Artoleum is the perfect floor covering for anyone seeking a particular ambience, whatever that ambience may be. Turn a dull office into an inspiring environment. Transform a shop or restaurant into an unforgettable experience. Bring colour to a school. Accentuate the feeling of calm and reassurance in a hospital or medical centre.

In addition to the colours and patterns found in the Artoleum collection, you can combine Artoleum with all designs from Forbo's Marmoleum global 2 collection as well as other products from Forbo.



Artoleum mineral 5704





breath-taking combinations

With Prisma's 'outspoken' and 'quiet' designs you can turn an ordinary space into an exceptional one, and a unique space into an unforgettable one. An environment that will take people's breath away, time and time again.

Prisma is a one-of-a-kind: a floor covering whose colours and pattern combinations have been designed to enhance each other perfectly.

The heart of each Prisma family is a quiet design, its subtle structure creating a solid, harmonious effect that works well in any space.

Complementing each quiet design are two, carefully matched 'outspoken' ones whose impact derives from a trick of the eye: viewed from close by you can clearly make out each colour; viewed from a normal distance the colours appear to merge to form a new one.

artoleum[®] prisma

Prisma's non-organic, rhythmic patterns contrast beautifully with the accompanying range of quiet designs, creating stunning combinations in every situation.



5067 | spring dance



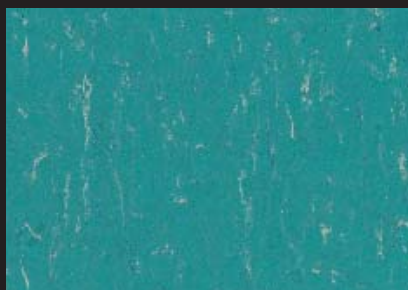
3626 | cricket field



5066 | herb garden



5046 | pool party



3624 | bahamian sea



5047 | fresh fountain



5087 | winter alps



3628 | ocean regatta



5086 | iris blue



5057 | fruit fantastic



3625 | salsa red



5056 | el torro



5016 | autumn glaze



3621 | sienna scenery



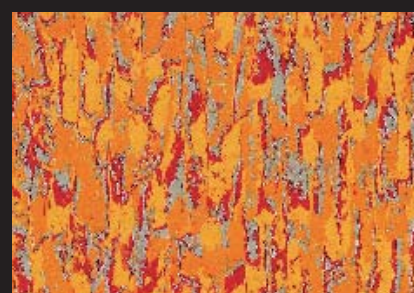
5017 | orange cocktail



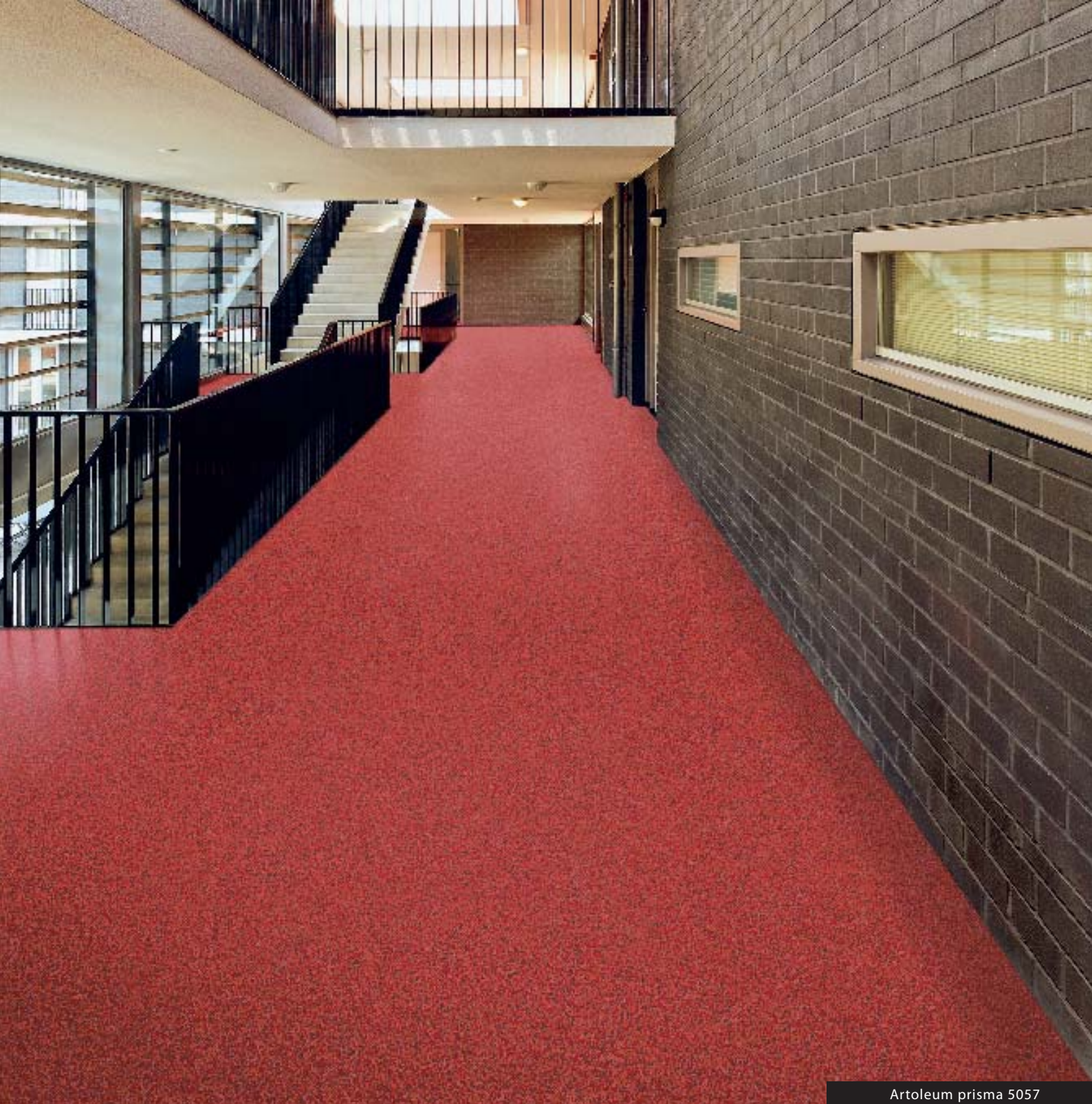
5026 | summertime



3622 | mellow yellow



5027 | festival yellow



Artoleum prisma 5057





natural colours for any interior

Mineral, the newest addition to Forbo's unique linoleum designs, has been created to suit the widest range of needs. For this reason, the Mineral colours take their cue from stones: natural and harmonious.

Mineral consists of easily understood designs that combine well with all kinds of interiors and which every decision-maker will feel comfortable with. At the same time, the possibility of combining colours within an overall neutral palette makes it easy to create a pleasant environment. A floor can consist of one design for a comfortable, relaxed feeling, or a combination from either the Mineral or the Marmoleum global 2 collections.

artoleum[®] mineral

Mineral's quiet, neutral patterns complement any space. They create a pleasing background or context that makes every interior shine.



5709 | crystal



5711 | smoky quartz



5702 | moonstone



5704 | citrine



5706 | calcite



5708 | carnelian



5710 | diamond



5705 | sodalite



5707 | sapphire



5712 | galenite



5701 | serpentine



5703 | moss agate



5713 | tiger eye



5715 | obsidian



5716 | amethyst



5714 | hematite



Artoleum mineral 5713





timeless, enduring and striking

The Graphic range is an Artoleum classic whose inspiration and impact lie in its simplicity. The designs and colours stand for purity and create a sense of timelessness that is as versatile as it is striking.

Graphic's use of contrast-rich blacks and whites and complementary grey tones makes this a monumental design that is truly architectonic.

Graphic adds a surprising twist to traditional interiors yet works beautifully with modern chrome, wood, stone and coloured surfaces.

The grey tones, meanwhile, work especially well in contemporary buildings where concrete or glass dominate. They continue the Graphic tradition of working in timeless harmony with every building material.

artoleum[®] graphic

Graphic's contrasting blacks and whites and subtle shades of grey combine excellently with all kinds of building materials.



5313 | aquatint



5305 | scrabble



5314 | scenario



5302 | print



5311 | signo



5303 | litho



5315 | dry point



5301 | sgraffito



5312 | libretto

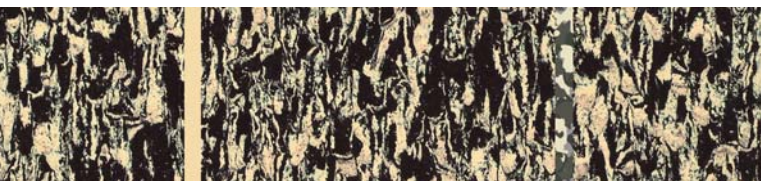


5306 | domino



Artoleum graphic 5313 | Artoleum prisma 3625



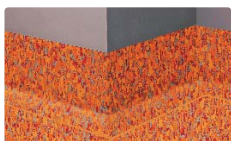


Artoweld

Artoweld MC

Multi Coloured welding rods

Artoleum floors can be welded for decorative or hygiene reasons. Options include plain-colour welding rods and, only with Forbo products, multicoloured welding rods for near-invisible seams.



Artoform S coving

This pre-formed coving adds the finishing touch. An elegant edging that ensures a hygienic, watertight floor. The use of a contrasting colour can create a playful effect.

Corkment

A cork underlayer 2.0 mm thick can be placed under Artoleum to ensure a reduction in impact sounds of at least 14dB, according the EN ISO 717-2.

Permanent bacteriostatic

Extensive, independent testing has proven that Artoleum is permanently bacteriostatic and so inhibits the growth of pathogens, including the MRSA bacteria. In addition, Artoleum requires minimal use of water for cleaning, so reducing moisture levels that can otherwise create breeding conditions for bacteria.

Life Cycle Assessments

Artoleum, like all Forbo linoleum, scores exceptionally well in independent Life Cycle Assessments. The raw materials used are renewable, while the plants and trees they come from also help reduce carbon dioxide levels.



Drying room yellowing

In the final production phase, a yellowish film known in the trade as "drying room yellowing" may appear on the surface of the product, particularly on lighter shades of linoleum. Once exposed to light it rapidly disappears.

Marmoleum vivace Marmoleum real Marmoleum dual Marmoleum fresco Marmoleum piano Marmoleum walton Artoleum prisma Artoleum mineral Artoleum prisma



Ultimate combinations

Marmoleum global 2

Marmoleum global 2 is the most complete linoleum collection available. Marmoleum has become synonymous with the optimal solution for hospitals, schools, offices, government buildings and utilities.

Marmoleum colourful greys

Marmoleum colourful greys combines colours which turn to grey when mixed together. The six marbled and six solid colours create a finely tuned range of balanced combinations.

Bulletin Board

Bulletin Board is a linoleum surfacing material ideally suited for use on notice boards. It provides a functional finish to walls, furniture, door panels and cupboards.

Furniture Linoleum

Forbo offers interior and furniture designers an extensive range of contemporary linoleum products suitable for countless applications for decorative surfacing.